

\$196,999 - 1 1503 Mill Woods Rd, Edmonton

MLS® #E4445393

\$196,999

3 Bedroom, 1.00 Bathroom, 1,178 sqft

Condo / Townhouse on 0.00 Acres

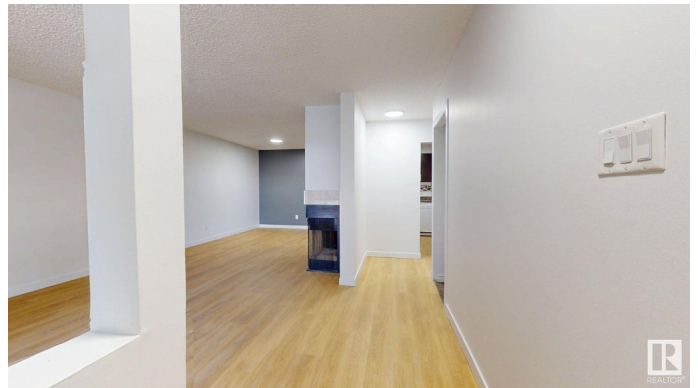
Crawford Plains, Edmonton, AB

Excellent opportunity awaits for First Time Home Buyers and Investors! 3 Bedrooms Main floor Carriage home in a great location. Just move in and enjoy this spacious home. 3 Good sized bedrooms, 2 have walk-in closets. The wood-burning fireplace, outside storage room, and in-unit laundry make this a great first home! Above all this Unit is on the Main Level which gives convenient Easy access to all amenities such as Grocery Stores, Transportation, Parks, Sikh Temple, and Schools. Low condo fees! *New Floor, Freshly Painted, New Led Lights and upgraded kitchen cabinets for the new homeowners.

Built in 1980

Essential Information

| | |
|----------------|-------------------|
| MLS® # | E4445393 |
| Price | \$196,999 |
| Bedrooms | 3 |
| Bathrooms | 1.00 |
| Full Baths | 1 |
| Square Footage | 1,178 |
| Acres | 0.00 |
| Year Built | 1980 |
| Type | Condo / Townhouse |
| Sub-Type | Carriage |



| | |
|--------|----------|
| Style | Bungalow |
| Status | Active |

Community Information

| | |
|-------------|----------------------|
| Address | 1 1503 Mill Woods Rd |
| Area | Edmonton |
| Subdivision | Crawford Plains |
| City | Edmonton |
| County | ALBERTA |
| Province | AB |
| Postal Code | T6L 4T3 |

Amenities

| | |
|----------------|--|
| Amenities | No Animal Home, No Smoking Home, Parking-Visitor |
| Parking Spaces | 1 |
| Parking | Parkade |

Interior

| | |
|-------------------|--|
| Interior Features | ensuite bathroom |
| Appliances | Dishwasher-Built-In, Dryer, Refrigerator, Stove-Electric, Washer |
| Heating | Forced Air-1, Natural Gas |
| Stories | 1 |
| Has Basement | Yes |
| Basement | None, No Basement |

Exterior

| | |
|-------------------|---|
| Exterior | Wood, Stucco, Vinyl |
| Exterior Features | Low Maintenance Landscape, Playground Nearby, Public Transportation, Schools, Shopping Nearby |
| Roof | Asphalt Shingles |
| Construction | Wood, Stucco, Vinyl |
| Foundation | Concrete Perimeter |

Additional Information

| | |
|----------------|----------------|
| Date Listed | July 2nd, 2025 |
| Days on Market | 19 |
| Zoning | Zone 29 |
| Condo Fee | \$310 |

DATA IS DEEMED RELIABLE BUT IS NOT GUARANTEED ACCURATE BY THE REALTORS® ASSOCIATION OF

EDMONTON. COPYRIGHT 2025 BY THE REALTORS® ASSOCIATION OF EDMONTON. ALL RIGHTS RESERVED.Trademarks are owned or controlled by the Canadian Real Estate Association (CREA) and identify real estate professionals who are members of CREA (REALTOR®, REALTORS®) and/or the quality of services they provide (MLS®, Multiple Listing Service®)

Listing information last updated on July 21st, 2025 at 7:17am MDT