

## \$388,400 - 8905 156 Street, Edmonton

MLS® #E4441776

**\$388,400**

5 Bedroom, 2.00 Bathroom, 1,102 sqft

Single Family on 0.00 Acres

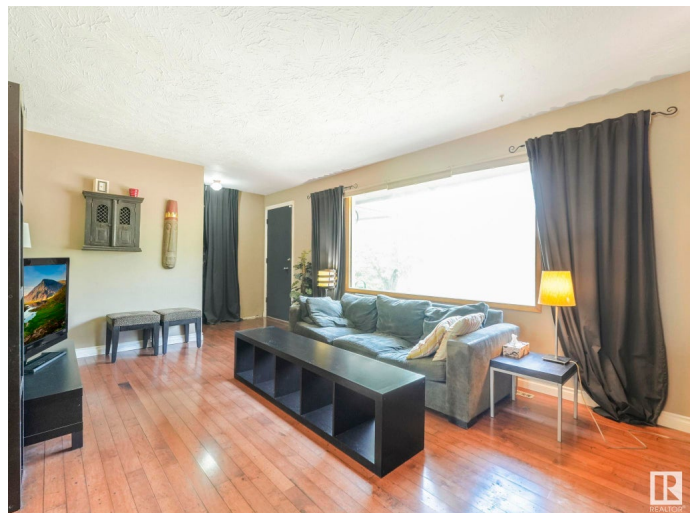
Jasper Park, Edmonton, AB

welcome to this well maintained bungalow located in the heart of the jasper place. third lovely 5 bed 2 full bath house offers over 1100 sq ft of well developed space. main floor boasts upgraded engineered hardwood floors with a lovely wood burning fireplace, upgraded kitchen with a lovely dining room area and an addition to the main floor that is currently being used as an office The well kept primary bedroom offers space for a large kind size be. plus a good sized second main floor bedroom. The basement has been fully developed with two more bedrooms plus a spacious second family room and a 3 pcs bath. this home boast a double oversized heated & insulated garage ideal for a handy man. The back yard offer a large covered deck with tons of room for family and friends BBQ .located across the street from Meadowlark medical center public transportation and schools..

Built in 1959

### Essential Information

MLS® #	E4441776
Price	\$388,400
Bedrooms	5
Bathrooms	2.00
Full Baths	2
Square Footage	1,102



Acres	0.00
Year Built	1959
Type	Single Family
Sub-Type	Detached Single Family
Style	Bungalow
Status	Active

### Community Information

Address	8905 156 Street
Area	Edmonton
Subdivision	Jasper Park
City	Edmonton
County	ALBERTA
Province	AB
Postal Code	T5R 1Y6

### Amenities

Amenities	Deck, See Remarks
Parking	Double Garage Detached, Heated, Insulated, Over Sized

### Interior

Appliances	Dishwasher-Built-In, Dryer, Garage Opener, Refrigerator, Stove-Electric, Washer, Garage Heater
Heating	Forced Air-1, Natural Gas
Fireplace	Yes
Fireplaces	Brick Facing
Stories	2
Has Basement	Yes
Basement	Full, Finished

### Exterior

Exterior	Wood, Stucco
Exterior Features	Back Lane, Fenced, Landscaped, Playground Nearby, Public Swimming Pool, Public Transportation, Schools, Shopping Nearby
Roof	Asphalt Shingles
Construction	Wood, Stucco
Foundation	Concrete Perimeter

### School Information

Elementary	Meadowlark elementary
Middle	Hillcrest, Laurier Heights
High	Jasper Place ,F.X

**Additional Information**

Date Listed	June 9th, 2025
Days on Market	28
Zoning	Zone 22

DATA IS DEEMED RELIABLE BUT IS NOT GUARANTEED ACCURATE BY THE REALTORS® ASSOCIATION OF EDMONTON. COPYRIGHT 2025 BY THE REALTORS® ASSOCIATION OF EDMONTON. ALL RIGHTS RESERVED.Trademarks are owned or controlled by the Canadian Real Estate Association (CREA) and identify real estate professionals who are members of CREA (REALTOR®, REALTORS®) and/or the quality of services they provide (MLS®, Multiple Listing Service®)

Listing information last updated on July 7th, 2025 at 1:47pm MDT