

## \$344,900 - 1405 10238 103 Street, Edmonton

MLS® #E4439321

**\$344,900**

2 Bedroom, 2.00 Bathroom, 763 sqft

Condo / Townhouse on 0.00 Acres

Downtown (Edmonton), Edmonton, AB

UNQUESTIONABLE ULTIMA!Â This CORNER UNIT has an OPEN FLOOR PLAN & 9' CEILINGS.Â Spacious 2 Bdrm, 2 Bath property features expansive NORTH & WEST SKYLINE VIEWS.Â Floor to ceiling windows make for a bright & sunny home all year round!Â The Kitchen includes high-end brand STAINLESS STEEL APPLIANCES, GLASS BACKSPLASH & GRANITE COUNTERTOPS. Each Bath has matching cabinetry w/ granite countertops & tile flooring.Â Enjoy the outdoors & the downtown landscape from your WRAP-AROUND BALCONY with GAS BBQ HOOK UP.Â Complete w/ UNDERGROUND, HEATED PARKING,Â IN-SUITE LAUNDRY & AIR CONDITIONING.Â Luxury private residence tower w/ CONCIERGE, Fitness Room, Lounge area, Hot Tub & Roof Top Deck.Â Walkable!Â Neighborhood provides access to every convenience: LRT, University, Restaurants, Groceries, Farmer's Market, Office Towers, Ice District, Shopping, River Valley. PET FRIENDLY BUILDING!

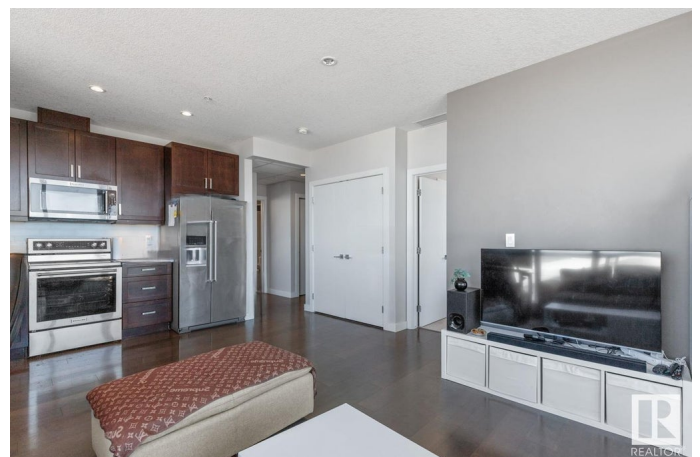
Built in 2016

### Essential Information

MLS® # E4439321

Price \$344,900

Bedrooms 2



Bathrooms	2.00
Full Baths	2
Square Footage	763
Acres	0.00
Year Built	2016
Type	Condo / Townhouse
Sub-Type	Apartment High Rise
Style	Single Level Apartment
Status	Active

### Community Information

Address	1405 10238 103 Street
Area	Edmonton
Subdivision	Downtown (Edmonton)
City	Edmonton
County	ALBERTA
Province	AB
Postal Code	T5J 0G6

### Amenities

Amenities	Air Conditioner, Ceiling 9 ft., Deck, Exercise Room, Hot Tub, Party Room, Recreation Room/Centre, Secured Parking, Social Rooms, Concierge Service, Natural Gas BBQ Hookup, Rooftop Deck/Patio
Parking Spaces	1
Parking	Underground

### Interior

Interior Features	ensuite bathroom
Appliances	Dishwasher-Built-In, Dryer, Microwave Hood Fan, Refrigerator, Stove-Electric, Washer
Heating	Forced Air-1, Natural Gas
# of Stories	31
Stories	1
Has Basement	Yes
Basement	None, No Basement

### Exterior

Exterior	Concrete, Brick, Metal
Exterior Features	Golf Nearby, Public Transportation, Shopping Nearby, View City, View

	Downtown
Roof	Flat
Construction	Concrete, Brick, Metal
Foundation	Concrete Perimeter

### **School Information**

Elementary	Garneau/St Catherine
Middle	Allendale/St Catherine
High	Victoria/St Joseph

### **Additional Information**

Date Listed	May 29th, 2025
Days on Market	52
Zoning	Zone 12
Condo Fee	\$537

DATA IS DEEMED RELIABLE BUT IS NOT GUARANTEED ACCURATE BY THE REALTORS® ASSOCIATION OF EDMONTON. COPYRIGHT 2025 BY THE REALTORS® ASSOCIATION OF EDMONTON. ALL RIGHTS RESERVED. Trademarks are owned or controlled by the Canadian Real Estate Association (CREA) and identify real estate professionals who are members of CREA (REALTOR®, REALTORS®) and/or the quality of services they provide (MLS®, Multiple Listing Service®)

Listing information last updated on July 20th, 2025 at 3:17pm MDT